

At Elmbridge Primary School children and families are at the centre of the support process. Early Help is about children and families getting the right help, at the right time. In the event of significant family events, open conversations and thinking about where to go for support is paramount to our Early Help Offer e.g. separation, bereavement, financial hardship, illness or mental health well-being. Early Help is about providing the right support as soon as problems emerge or when it is very likely that there will be problems in the future. We believe that early interventions for children and families are more effective in promoting the welfare of children than reacting later.

All children are encouraged to express their feelings, anxieties and fears. This can be done communally through Wellbeing activities, in moderate or small groups or individually. All staff are committed to safeguarding of children in our care. Staff are also vigilant to the anecdotal conversations and the presentation of children in order to safeguard the children in our care and/or community. In some cases, immediate, urgent action might be necessary if a child or young person is at risk of immediate harm.

When families and children need extra support they need it in a timely way and a coordinated and multi-agency approach is usually best. The school has close working partnerships with extended professional teams such as: The School Nurse team, Advisory Teaching Service, Educational Psychologist, Children and Young People's Service and family care professionals. All pupils have access to a wide range of support within our school such as: Helping Hands, for low level playground issues, peer mentors, Pastoral Teaching Assistants, school counsellors and key trusted adults. We also have a lead teacher for Gloucestershire Healthy Living and Learning (GHLL) who can offer further support to staff and families. Families themselves should also feel empowered to make contact with the relevant professionals or agencies should they need help and support. A good resource available for families to use is:

Glos Families Directory which has information for families with children aged 0-19 (or 25 if the young person has a disability or additional needs) on a range of issues.

If you are unable to find an answer to your question on Glosfamilies Directory website and need more help, please contact the Family Information Service via email familyinfo@gloucestershire.gov.uk or telephone 0800 542 02 02 or 01452 427362.

Our Family Support Worker, Mrs. Howard, is available throughout the school day to parents and carers who might need advice and signposting to the appropriate service within Gloucestershire. In the event of a crisis, the school has access to: Food bank vouchers, school uniform, household goods and clothing (local charities).

School are also able to provide day to day care e.g. breakfast, school uniform when the need arises.

If a child is persistently absent or we are unable to contact parents to check the reason for absence, staff will make a welfare Home Visit to offer support.

As a school we use the emotion coaching approach with our children. We offer a set of workshops to parents to help them use a similar approach at home with their child/children.

All staff are available in a pastoral capacity if parents/carers have a concern. Staff may not always have the answer but will try to find further information or will be able to signpost parents/carers to other support services. Parents are able to speak to the class teacher initially or can make an appointment to speak to a member of staff.

Designated Teaching Assistants on both sites are responsible for the pastoral support in a year group.

School staff with designated responsibility for providing early help will:

- Undertake an assessment of the need for Early Help
- Make use of the Graduated Pathway for Early Help and services provided by the relevant Early Help partnership
- Provide Early Help services e.g. pastoral support, SENDCo
- Refer to appropriate services e.g. school counsellor, school nurse, CAMHS, Young Minds Matter, Infobuzz, TIC +, Gloucestershire Young Carers, Winston's Wish.
- Ensure that pupils have a trusted adult available to them to listen to their emotional health needs

Elmbridge Childcare Club

This is a privately run club offering before school and after school care. In addition to termly childcare the club also offers full day sessions, in many of the school holidays, to any child aged between 4-11, (does not need to be a pupil at Elmbridge Primary School, but must be registered at the childcare club to be able to attend). To register for the club, you will need to contact Emma Thomas using the information below.

Contact

Emma Thomas - Owner/Club Manager
Elmbridge Childcare Club LTD (reg. No. 08318145)
c/o Elmbridge Primary School
Sisson Road (off Elmbridge Road)
Gloucester GL2 0PE
Tel: 07544 575052 elmbridgechildcareclub@hotmail.co.uk
www.elmbridgechildcareclub.co.uk

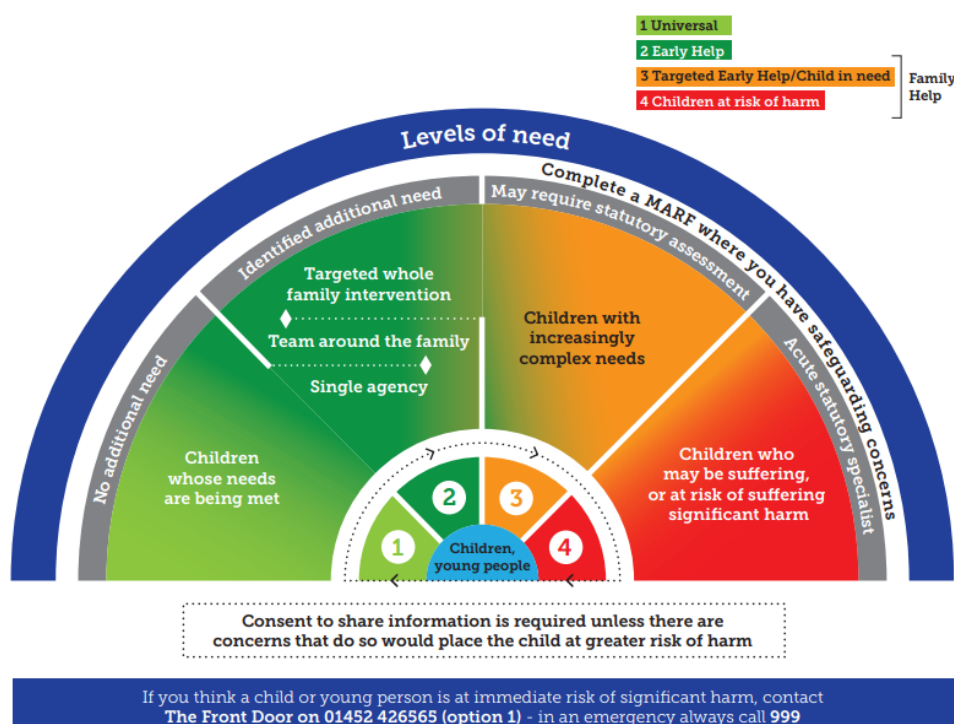
Our offer of Early Help is based on two basic principles:

1. Children and their families have different levels of needs at different times and, as a result, of different situations;
2. All needs will be taken into account when considering the type of support that would be appropriate and beneficial and which professionals can offer help.

The following information identifies some of the services that the school can offer or signpost to dependent on levels of need. The information is taken directly from the GSCP website and is not exhaustive. We will always seek additional/alternative support as appropriate.

The Windscreen

A diagram to demonstrate the Continuum of Need



All services and interventions seek to work openly with the family (or young person if age appropriate) in order to support them, address their needs at the lowest possible level and prevent them from escalating. We will only request services at a higher level after we have done everything possible to meet needs at the current level.

Child Needs	School Provision	Community Provision/Other Provision	Other Provision
Children are making good overall	Elmbridge Primary's curriculum develops the	www.glosfamiliesdirectory.org.uk have services that are accessible without referral or assessment.	Parentline Plus Citizen's Advice Bureau www.actionforchildren.org.uk

<p>progress in all areas of development. Living in a protected environment where their needs are recognised and met. No additional support needed beyond that which is universally accessible.</p>	<p>characteristics that pupils need to develop and thrive as individuals, as part of a family and in the community. The whole child is nurtured through a values led curriculum and particular development of their pastoral needs through our Wellbeing Curriculum. Our Pastoral team are available to meet with parents to support family needs and signpost additional support. Regular pupil surveys allow all children to have a voice about their</p>		<p>www.nhs.uk/Change4Life</p> <p>www.familylives.org.uk - general help and support for parents</p> <p>Luminova - mental health support for families</p>
--	---	--	---

Elmbridge Primary School - Offer of Early Help 2025-2026

	<p>happiness and wellbeing. The school makes referrals to the school nurse whenever appropriate. Free Friday breakfast is available before school to all children and families.</p>		
<p>Children needing some additional support which may be related to health, educational or social development or a coordinated response</p>	<p>Our Attendance team monitors attendance and lateness. Class teachers monitor pupil's general behaviour, appearance, engagement, attitude and disposition. Concerns are referred to Pastoral team, SENDco or DSL. Regular meetings regarding</p>	<p>CAMHS - Children and Adolescent Mental Health Services</p> <p>Speech and Language Therapy Services</p> <p>School Nurse/Health Visitor/GP</p> <p>Gloucester Targeted Support Team - Early Help</p> <p>Gloucestershire Children's Safeguarding Partnership Tel: 01452 426565</p>	<p>As above</p> <p>https://www.ghc.nhs.uk/our-teams-and-services/children-and-young-people/camhs/young-minds-matter/</p> <p>www.onyourmindglos.nhs.uk</p> <p>www.childline.org.uk</p> <p>Gloucester City Housing</p> <p>https://www.nhsglos.nhs.uk/your-health-services/healthy-communities/live-well/</p> <p>www.asthma.org.uk</p> <p>https://www.anaphylaxis.org.uk/</p> <p>www.2gether.nhs.uk - mental health services for children</p> <p>www.cafamily.org.uk - support for families with disabled children</p> <p>http://www.nspcc.org.uk</p>

Elmbridge Primary School - Offer of Early Help 2025-2026

	<p>pupils, weekly staff meetings agendas highlight pupils' needs. Actions will be set out accordingly to outcomes. Children displaying vulnerability (socially and/or emotionally) may be referred to our pastoral TAs, art therapy or our school councillor. The school has a wellbeing cabin, specifically for pastoral sessions.</p>		<p>https://gloucestershiregatewaytrust.org.uk/</p>
Needs are complex and children are highly vulnerable and living with potential risk. This may lead to an	<p>DSL will request Social Care involvement through a Multi-Agency Referral Form. Following an initial assessment</p>	<p>As Above Children's Social Care Police (Tel:101) Specialist Health Services Advisory Teaching Service (ATS)</p>	As above

Elmbridge Primary School - Offer of Early Help 2025-2026

<p>integrated assessment and plan with a lead professional coordinating the support from a range of agencies</p>	<p>with social care the child/children may be supported by a Children in Need plan or Child Protection plan. The school is involved in any plans which are written. SENDCo represents the child if there are special educational needs with the potential to request an EHC assessment.</p>	<p>Educational Psychology Service (EPS)</p> <p>Gloucester Community Paediatricians</p> <p>Early Help through Children's Centres/ Barnardos</p>	
<p>Children are at immediate risk of significant harm. This will require immediate referral to social care or intensive specialist</p>	<p>DSL requests social care involvement through the Multi-Agency Referral Form emailed directly to GSCP. DSL coordinates</p>	<p>As above</p> <p>GDASS</p> <p>Children's Safeguarding Helpdesk Tel: 01452 426565 Out of Hours: 01452 614758</p>	<p>As above</p>

care to health professionals	at school level.		
------------------------------	------------------	--	--

Guidance on a range of issues can be found at:

<p>Family Information Service</p> <p>A wealth of information to support many issues including childcare and support for children with disabilities.</p>	<p>Email: familyinfo@gloucestershire.gov.uk Tel: 01452 427362 Website: https://www.gloucestershire.gov.uk/health-and-social-care/children-young-people-and-families/family-information-service-fis/</p>
<p>GSCP Gloucestershire Safeguarding Children's Partnership</p> <p>Important information for parents and professionals in Gloucestershire in relation to keeping children safe and support services available.</p>	<p>Website: https://www.gloucestershire.gov.uk/gscp/</p> <p>If you have an urgent safeguarding concern for a child or young person, please continue to call the Children's and Families Helpdesk on 01452 426565.</p>
<p>SEND Graduated Pathway of early help and support for all children with additional needs</p>	<p>The Graduated Pathway provides support for pupils with SEND from the time the needs are identified.</p> <p>At Elmbridge Primary School we strive to support all pupils to enable them to achieve at school. In order to achieve this many steps are taken to support them through their learning journey. Quality first teach is vital, however for some pupils there are times when additional support is required for them to reach their outcomes.</p> <p>Everyone who works with your child takes responsibility to ensure that your child achieves their full potential and engages with the process. We also have a SEND team to provide additional</p>

Elmbridge Primary School - Offer of Early Help 2025-2026

	<p>advice and support to enable them to achieve this. Our SENDCos are Mrs Pearce and Miss Pembridge. They can be contacted via the school office on: 01452 523632. The school offer is available to view on the school website.</p>
--	---