

Elmbridge v Dinglewell - League match

A fantastic performance by the Elmbridge team who showed great spirit and skill to get a 3-3 draw against a strong Dinglewell team. Elmbridge went 1-0 up after just 30 seconds and quickly followed up with a second goal to make it 2-0.

Dinglewell hit back before half time with two quick goals for a half time score of 2-2. Elmbridge started brightly and took the lead early in the second half, but they couldn't quite hold on and Dinglewell equalised to make the final score 3-3.

School Election Results

Class	School Council		Eco Council	
	Captain	Vice	Captain	Vice
1	Ethan Neininger	Rory Watson	Caleb Gladwell	Eadie Martin-Mann
2	Alexa Pritchard	Sophie Beard	Alexa Pritchard	Holly Kent
3	Rowan Collins	Muhamud Yaaseen Patel	Rose Stevenson	Benji Booth
4	Elsie Castrophilippo	Henry Baldrey	Erin Morris	Lily Dowle
5	Penelope Bevis	Carter Mitchel	Henry Bridgewater	Charlie Parker
6	Max Griffin	James Cooper	Zidan Parekh	
7	Belle Jones	Hadleigh-Rae West	Anya Wisbey	Hannah Smith
8	Aria Bray	Jude McMylor	Advait Panicker	Izzy Guthrie
9	Fai Hall	Darla Robinson	Griff Poulton	Jasmine Young
10	Mia Gill	Jasmine Banbury	Finley McShane	
11	Fawzan Shaik	Srishti Sreeram	Amelia Baldrey	Neeti Chapagain
12	DJ Howell	Adam Waller	Olivia Shaw	Zaviyar Shaik
13	Mikey Clune	Raeesa Patel	To be confirmed	
14	Sofia Jones	Harry Greene	Harrison Young	Isla-May Gorman
15	Afia Kumi-Addo	Siddid Panicker	Muhammad Chand	Layla Wills
16	Elsa Ovens	Zara Rebello	Maryam Bulbul	Eli Watson
17	Harry Creed	Izzy Smith	Freddie Rudd	Martha Neininger
18	Hannah Mathew	Xavier Coughlin	Thea Miller	Tim Yarsley

Well done to all the children who put themselves forward.

Gloucester Lottery

Just a reminder that if you are a supporter of Gloucester Lottery, please choose to support Elmbridge Primary School's page. 50% of all tickets sales comes to us and 10% to other good causes in Gloucester. Your support does make a difference and participants can win prizes up to £25,000. Tickets cost £1 per week. Details and a link to our page with a chance to win a **£1,000 Bicycle Voucher** on 29th October on top of the weekly cash prizes are on the attached document.



There's no need for existing supporters to buy a separate ticket as they will automatically be entered into this national draw.



School Games Gold Mark Award

We are delighted to announce that we, Elmbridge Primary School, have achieved the School Games Gold Mark Award for the 2021/22 academic year. The School Games Mark is a Government-led award scheme launched in 2012, facilitated by the Youth Sport Trust to reward and recognise school's engagement (provision and uptake) in the School Games against a national benchmark and to celebrate keeping young people active, and we are delighted to have been recognised for our success.

We are extremely proud of our pupils for their dedication to all aspects of physical activity and school sport, including those young volunteers, leaders and officials who made our events possible. We are committed to using the School Games to try and engage those young people who haven't previously been active or represented our school and to try and ensure that all our students have a positive experience and want to try out new activities beyond school too in our community. We believe in the power of physical activity and school sport as a school and give opportunities to those young people that need it most either as a participant, leader, official or volunteer. As part of our application, we were asked to fulfil criteria in the areas linked to the five School Games outcomes and we are pleased that the hard work of everyone at our school has been rewarded this year. We look forward to applying once again in 2023!

Y6 Transfer to Secondary School

Please be reminded, the deadline for submitting your secondary school choices for current Year 6 children is **Monday 31st October**.

To make your application you need to register with school admissions at the following website:

[School admissions - Gloucestershire County Council](#). You will receive email confirmation of your application which you must keep.

Before applying it is important that you read the Secondary School Admissions Information and Guidance Booklet available on the Gloucestershire.gov.uk website.

Asthma Reminder

If you have received a letter regarding your child's Asthma card and inhaler, and are yet to return it, please can you send this to the school office or to their class teacher as soon as possible. It is also important to advise the school if your child's condition changes in any way, for example, their asthma may be more troublesome than usual, which may cause disruption to sleep or eating patterns.

Nut Allergies

The school operates a nut free kitchen ensuring that no meals that are offered by our catering company contain nuts. Any children that have a nut allergy are managed with a care plan. We would ask parents to be considerate when sharing food, such as snacks after school, and that you check with the parent\carer beforehand.

Parking Reminder

Please park considerately when collecting or dropping off your children. Keep Paths clear for pedestrians. Keep junctions and driveways clear so that the local community can continue with their day without being obstructed. Keep zig zag markings and solid white lines clear so your children can be seen.

Zig Zag lines are designed to indicate that parking and overtaking in these zones is strictly prohibited. Not only are you putting our children and other members of the community in danger you risk being fined and receiving penalty points by parking your vehicle on zig-zag or solid white lines.

Illegal parking is dangerous and will be reported to the police.

Diary Dates

w/ Monday 10th October	Book Fair - Junior Crush Hall 3.30pm to 4.00pm
Monday 3rd October	Year 4 trip to Gloucester (Romans)
Thursday 6th October	Year 2 trip to Gloucester Cathedral
w/c Monday 10th October	Book Fair—Junior Crush Hall 3.30pm to 4.30pm
Tuesday 11th October	Colorfoto individual school photos
Wednesday 12th October	Reception family tree event 9am
Monday 17th October	Black History Awareness assembly
Monday 17th to 20th October	Flu vaccinations Reception—year 6
Thursday 20th October	End of Term 1
Friday 21st October	<i>Inset Day—school closed for pupils</i>
Monday 31st October	Start of Term
Thursday 3rd November	PTA Firework Display (5.00pm to 7.00pm)
w/c Monday 14th November	Really Wild Reading Festival
Monday 14th - 25th November	Anti-Bullying and Equalities fortnight

Please click [HERE](#) to view the full list of all 2022/23 Diary Dates

Letters sent home this week:

Newsletters from this academic year are also on the website under the 'Parents' tab.

Any letters, including those sent via ParentMail, are available as paper copies in the school office.

30 Sept - Flu immunisation forms

30 Sept - PTA Fireworks Night

30 Sept - Parent Governor election

4 Oct - NHS Vision, height & weight check

4 Oct - Changes to grammar school tests

5 Oct - Hello Yellow Day

6 Oct - Harvest foodbank donations

6 Oct - PTA Christmas raffle

6 Oct - Y6 Isle of Wight residential



Thank You!

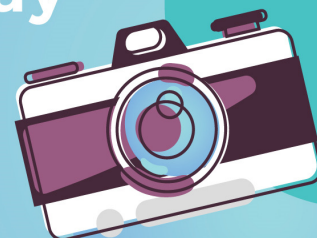
Your donations for Rags 2 Riches raised £40.00, we will be holding a further collection in February.

Please be reminded, our Firework night is on Thursday 3rd November and tickets are available to buy via your ParentPay account.

Photo Day

ELMBRIDGE
PRIMARY
SCHOOL

TUESDAY
11TH OCTOBER



colorfoto

Contact us

www.elmbridgeprimaryschool.co.uk

01452 523632

Email: admin@elmbridgeprimary.co.uk

