



Elmbridge Primary School Newsletter 3rd March 2023

Dear Parents & Carers

It was fantastic to see the children (and adults) in their pyjamas or dress up as their favourite character today for our 'World Book Day' event. Also, many Year 2 and Year 3 children came back to school on Tuesday evening dressed in their PJs, dressing gowns, slippers and with their favourite teddy bear to join staff for 'Stories for Bedtime' and supper. This is always a relaxing evening and the staff and I relish the opportunity to share our love of books and favourite stories with the children. I was also impressed with the classroom doors around the school, where the children have decorated them with their favourite (or class) book! (see next page).

I would like to take this opportunity to thank you all for supporting your child with any sponsorship events to help raise money for furnishing our new wellbeing cabin. The total amount raised was £1599! It is lovely to now see the children making good use of this wonderful new space.

I would like to welcome Miss Alex Hawkins to the year 4 team, who will be covering class 12 during Miss Bell's absence. I would also like to welcome our B.Ed. students, Lou Underhill, Emma Walker and Thomas Bentley, who will be working in Year 1 (C1), Year 2 (C4) and Year 3 (C7) respectively. They will be with us for the next 6 weeks.

Finally, I look forward to seeing you at the forthcoming parent consultation evenings on Tuesday 21st & Wednesday 22nd March; the office will send out appointment slots next week.

Best wishes

Glen Tharia – Head Teacher

Online Safety

A new report has been released which analyses the online use of 5-11. It makes an interesting read:

<https://natterhub.com/press-releases/over-75-percent-of-6-7-year-olds-have-joined-in-with-an-online-chat>

How many of the activities mentioned in the article does your primary aged child take part in?

Attendance

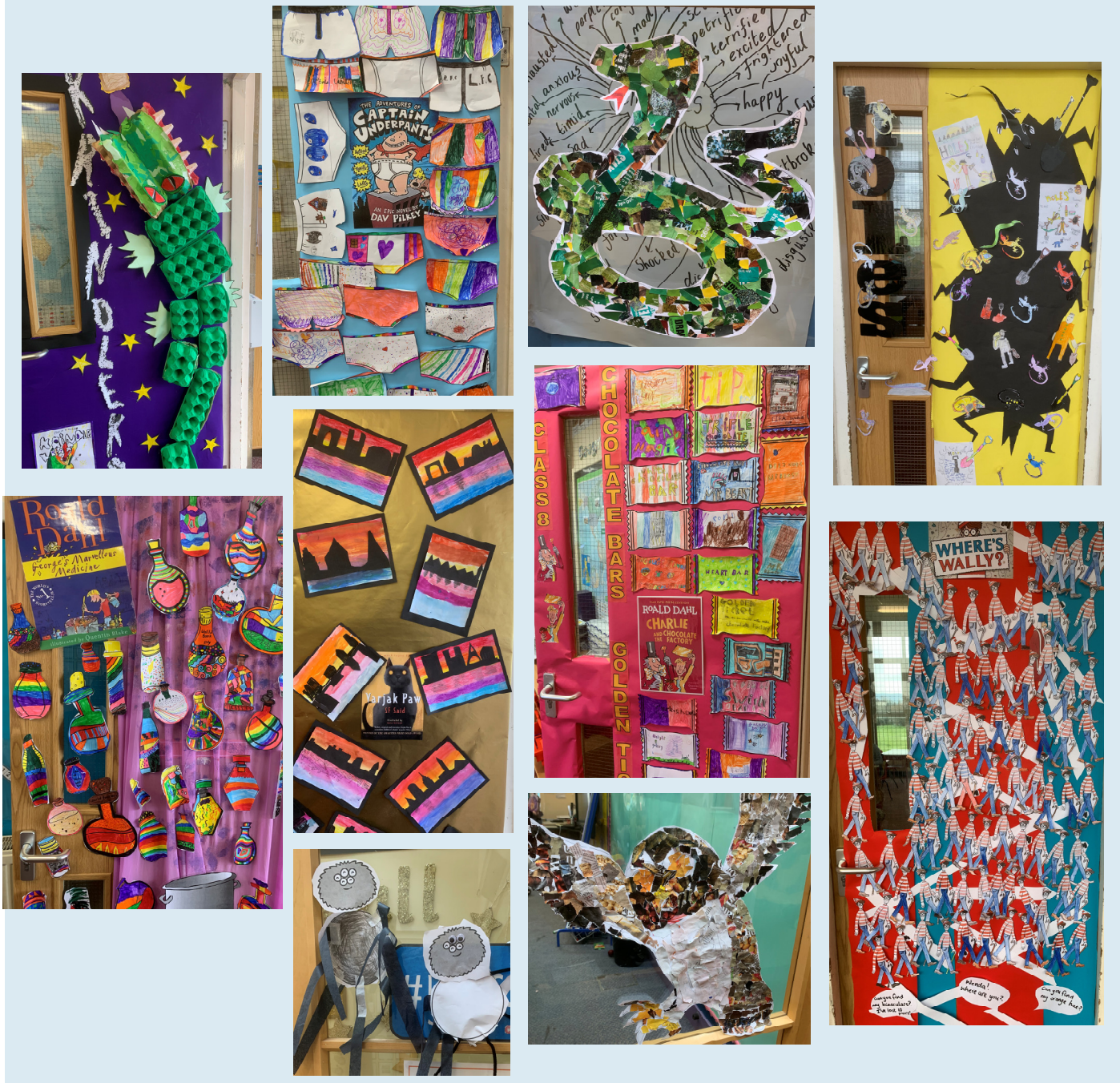
Our attendance this term is currently **95.06%**
Remember:



**EVERY SCHOOL DAY
COUNTS!**

World Book Day

All the children and staff have really enjoyed celebrating World Book Day this year!. Not only did everybody join in with dressing up but the classroom doors were also decorated throughout the site. Here is a selection of their colourful creations for you to enjoy:



Relationships, (Sex) and Health Education – R(S)HE

As stated in a previous newsletter, we have reviewed our 'Wellbeing' policy, which includes the statutory guidance on how we deliver relationships, (sex) and health education - R(S)HE. Please take time to read the policy on our website [here](#) or ask the school office for a paper copy.

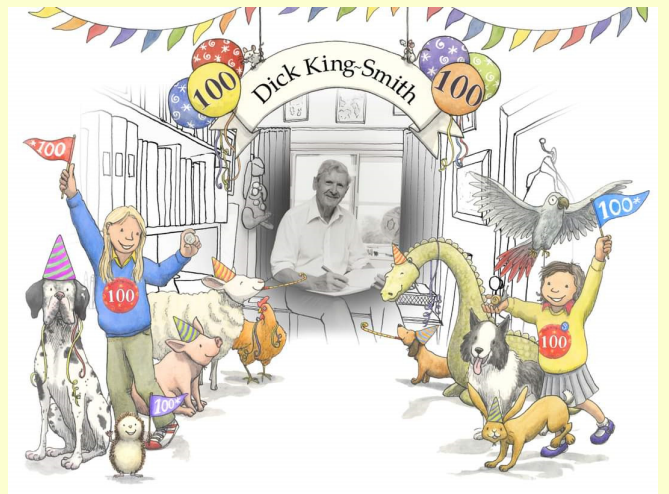
If you have any concerns or questions about the policy or how we deliver our 'wellbeing' curriculum, please contact Mrs Holliday via admin@elmbridgeprimary.co.uk or come in and speak directly.

Dick King-Smith

Gloucester Cathedral and the family of Dick King-Smith will host a day of celebration on 11th March 2023, to mark the centenary year of the Gloucestershire-born author's birth.

From midday, members of the public are invited to the Cathedral's Chapter House, where Dick's children Juliet, Liz, and Giles, and his great-granddaughter Josie Rogers will talk about Dick's life and work, as well as 'Ambrose Follows His Nose', his recently discovered, unfinished tale, which Josie completed and was published last year.

Throughout the afternoon, there will be stories and arts and crafts with Read With Me, and throughout the day, Gloucester Library will simultaneously host readings and activities. At 4.30pm, Gloucester Cathedral's Evensong in The Quire will be dedicated to Dick King Smith's life.



Gloucester Lottery

Just a reminder that if you are a supporter of Gloucester Lottery, please choose to support Elmbridge Primary School's page. 50% of all tickets sales comes to us and 10% to other good causes in Gloucester. Your support does make a difference and participants can win prizes up to £25,000.

Tickets cost £1 per week. Details and a link to our page with a chance to win a trip to Center Parcs are on the attached document.

There's no need for existing supporters to buy a separate ticket as they will automatically be entered into the special draw.

All proceeds are currently being used towards the Wellbeing Cabin.

Many thanks for your support.

[Click Here to Play Now](#)

Letters sent home

Newsletters from this academic year are also on our website under the 'Parents' tab. Any letters, including those sent via ParentMail, are available as paper copies in the school office.

27 Feb - Grammar School information evening

27 Feb - Book Fair

27 Feb - Strike action 2nd March

28 Feb - Amendment to Y3 Worcester rail trip

28 Feb - Y6 Isle of Wight residential reminder

28 Feb - Y5 South Cerney payment letter

1 Mar - Gloucester Lottery



Family Quiz Night

The PTA are hosting a Family Quiz Night on Thursday 30th March from 6.30pm until 9.00pm

Tickets are £2.00 each

Cash Prize and Fireworks Tickets

Food is available on the night but needs to be pre ordered: Jacket Potato with either cheese, beans or chilli £2.00 per person. Tea, coffee, soft drinks & snacks are available on the night.

To confirm your place please email elmbridgeprimaryschool@yahoo.com

Diary Dates

Friday 17th March	Comic Relief Day
Tuesday 21st March	Parents' Evening
Wednesday 22nd March	Parents' Evening
Monday 27th March	Climbing Wall and Caves
Monday 27th March	Showtime production for parents - Infant hall 4pm
Wednesday 29th March	Spring concert - Junior hall 6.30pm
Friday 31st March	PTA Easter fundraiser
Friday 31st March	End of Term 4 - Non uniform day
Monday 17th April	Start of Term 5
Thursday 27th April	PTA Disco Y2 - Y5
Monday 8th-Friday 12th May	Year 6 SATs week
Monday 8th-Friday 12th May	Year 5 Watersports activities (non residential)
Monday 15th-Friday 19th May	Year 6 Isle of Wight residential trip
Monday 22nd May	Charity assembly launch
Wednesday 24th May	Green Day - whole school
Friday 26th May	End of Term 5
Monday 5th June	Start of Term 6
Wednesday 7th June	Charity Presentation Assembly
w/c Monday 12th June	Year 5 Bikeability week
Tuesday 13th June	PTA AGM (tbc)
Tuesday 13th June	New Reception Parents' Information Evening - Infant Hall
Monday 19th to Friday 23rd June	Sports Week
Monday 19th June	Year 2 - 6 Sports Morning - School field
Tuesday 20th June	Year 2 - 4 Sports Morning (including parents) - School field 9.30am -to 12.00pm
Wednesday 21st June	Reception - Y1 Sports Morning (including parents) - School field 9.30am to 12.00pm
Thursday 22nd June	Year 5 & 6 Sports Morning (including parents) - School field 9.30am to 12.00pm
Friday 23rd June	Panathlon Sports Event Y2-Y5 9.30am to 12.00pm

Please click [HERE](#) to view the full list of all 2022/23 Diary Dates

Contact us

www.elmbridgeprimaryschool.co.uk

01452 523632

